

Wideband Log Periodic Dipole Array

80 – 2000 MHz

Product Code: LPDA-A0016

VERSION: 2.6



SPECIFICATIONS:

Frequency range	80 – 2000 MHz
VSWR	< 2.5:1
Feed power handling	300 W
Nominal input impedance	50 Ω
Connector	N-type female
Gain	> 8 dBi (typically)
E-plane 3 dB beamwidth	60°
H-plane 3 dB beamwidth	110°
Polarisation	Linear (vertical or horizontal)
Mechanical:	
Dimensions (l x w)	2200 mm x 2000 mm
Weight	8.5 kg including bracket, 6.0 excluding bracket
Material	Aluminium, stainless steel and Tufnol
Mounting method	Bracket for 50 mm – 100 mm poles
Environmental: designed to meet the following specifications	
Wind survival	160 km/h
Temperature operational	– 20 °C to + 55 °C

PRODUCT FEATURES:

- High gain
- Low and stable VSWR
- Vertical or horizontal polarisation
- Wide frequency range
- Easy to assemble
- Elements fit neatly into a carry bag
- Stylish and rugged design
- Balanced feed point

PRODUCT DESCRIPTION:

The LPDA-A0016 is a general purpose wideband transmitting and receiving 80 MHz to 2 GHz log-periodic dipole array (LPDA) antenna. It can be used as a spectrum monitoring antenna. It is also used for EMC emission and susceptibility testing.

Wideband Log Periodic Dipole Array

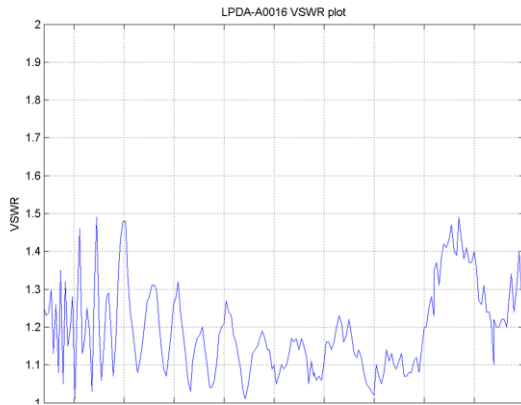
80 – 2000 MHz

Product Code: LPDA-A0016

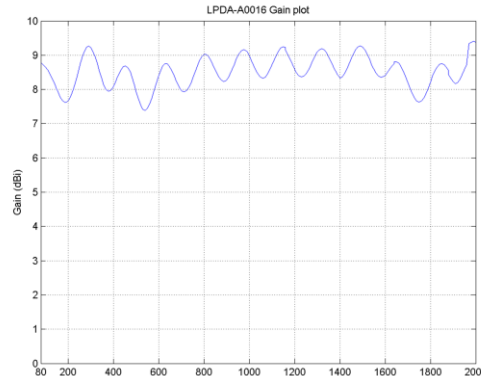
VERSION: 2.6

VSWR, GAIN GRAPHS AND RADIATION PATTERNS:

VSWR:

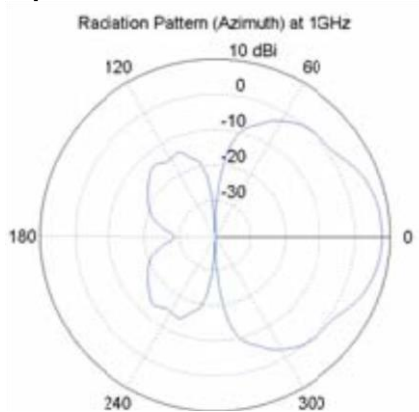


Gain:

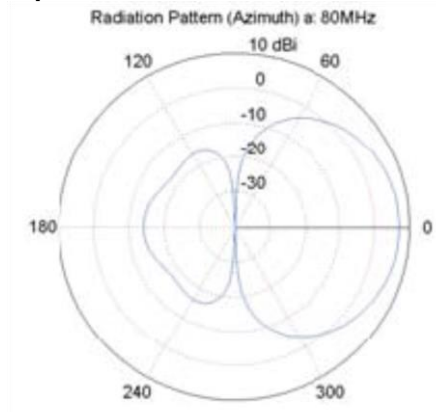


Radiation patterns:

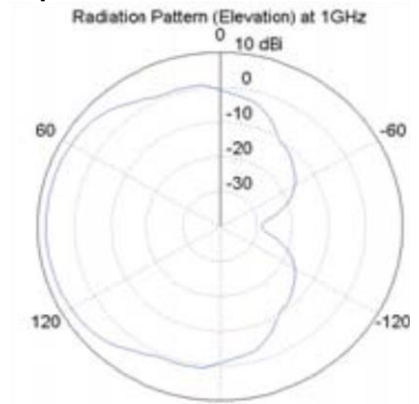
E-plane:



E-plane:



H-plane:



H-plane:

